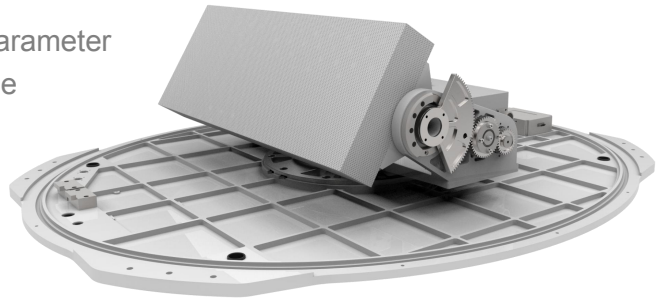


## Ku Band Fixed-wing Airborne VSAT

- Automatically collect and output carrier position and attitude information
- Storage of more than 10 satellite position parameter
- Terminal One-key start, antenna tracking the satellite automatically
- Polarization direction automatically adjust
- Power-down memory and protection
- Device detection and status checking
- Power-on self test and fault alarming



| MODEL                           | GA450  |
|---------------------------------|--|
| Dimension                       | Φ870mm×315mm   |
| Weight                          | ≤39.5kg  |
| Polarization                    | Linear VP/HP   |
| Frequency Range                 | RX : 10.95 ~ 12.75GHz TX : 13.75 ~ 14.5GHz   |
| Receive G/T (Elevation 10° )    | 11.54 dB/K @ 12.25GHz (Normal temperature@ 27°C , LNB noise factor @0.9 dB , Radome excluded ) |
| Transmit EIRP (dBW)             | 48.5dBW @14.25GHz (40W BUC , Radome excluded)  |
| Cross Pol Isolation             | ≥30dB  |
| RF Input(Tx)                    | 13.75 ~ 14.5GHz, SMA 50Ω   |
| RF Output(Rx)                   | 950-2150MHz, TNC 50Ω   |
| Power Consumption               | 100W ( Average ) 40W BUC included  |
| Azimuth Range                   | 360°continuous rotation  |
| Elevation Range                 | -10°~ 90°(80°Performance reach the standard)   |
| Az/EI Velocity:<br>Acceleration | > 60°/s; >100°/s <sup>2</sup>  |
| Tracking Accuracy               | ≤0.2° RMS  |
| Input Power                     | DC18 ~ 32V   |
| Operating Temperature           | -45°C ~ 70°C   |
| Altitude                        | 16800 Meters (55000Feet)   |